

63 years
of thoughtful
appliances

Godrej

APPLIANCES
THINGS MADE THOUGHTFULLY

DIL SE DIWALI.

ENJOY UP TO 20%
CASHBACK WITH
ATTRACTIVE EMI AND
FINANCE OFFERS
THIS FESTIVE SEASON.



FESTIVE 2021 OFFER DETAILS,
TERMS AND CONDITIONS

ECO-FRIENDLY TECHNOLOGIES

*T&C apply. Offers valid from 1st October 2021 to & 15th November 2021. For details, visit: shop.godrejappliances.com/Diwali-2021.

REFRIGERATORS



ADVANCED REFRIGERATORS WITH THE COOLEST OFFERS



EASY EMI OFFERS

SCHEME DESCRIPTION					BAJAJ FINANCE		HDFC / HDB IDFC / HOME CREDIT / TVS KOTAK FINANCE	
SCHEME DESCRIPTION	Max Tenure (months)	Monthly EMI	Advance EMI	Model description	DBD	PF	DBD	PF
Fix EMI ₹ 900	24	₹ 900	3, 4	DC: 190 L and Below models (Excluding 2 star Edge and Axis)	2.50%	₹ 450+Taxes	-	-
Fix EMI ₹ 1100	24	₹ 1100	3	DC: above 190 L up to 200 L	2.50%	Nil	-	-
Fix EMI ₹ 1300	24	₹ 1300	3	DC: above 200 L	2.50%	Nil	-	-
Fix EMI ₹ 1500	24	₹ 1500	3	FF: below 270 Ltr models	2.50%	Nil	-	-
Fix EMI ₹ 1700	24	₹ 1700	3	FF: 270 L up to 300 L	2.50%	Nil	-	-
Fix EMI ₹ 1900	24	₹ 1900	3, 4	FF: above 300 L	2.50%	Nil	-	-
Take home an appliance with ₹ 1 Down payment	8	8 EMI	0	DC: Edge DUO 205 LTR, 220 LTR & 255 LTR 3 star models. FF: All Frost free models	3.00%	Nil	2.50%	Nil
1 EMI Off (Bajaj / HDB)	20	20 EMI	5	NXW Aura	3.00%	Nil	3%	-
EBO Triple 0 Scheme - Brand stores	8	8 EMI	0	All DC & FF (Except Edge 185 & 190 ltr).	0%	₹ 0	0%	Nil
10 month EMI	10	10 EMI	2	DC: Edge PRO 190 LTR 3 star / Edge RIO, NEO 192 Ltr all models / All 200 ltrs and above models All Frost free models.	2.50%	Nil	2.00%	Nil
12 month EMI	12	12 EMI	4	All DC models Except Edge 185 ltr & Axis. All Frost free models	2.50%	Nil	2.00%	Nil
Buy Godrej REF & Washer on FIX EMI ₹ 1900	24	₹ 1900	4	REF DC: DC above above 200 LTR (All star rating). Washer: SA Ultima and Ultima S models.	3%	Nil	-	-
Buy Godrej REF & Washer on FIX EMI ₹ 2700	24	₹ 2700	4	REF: FF 3 star all capacity, conver (331 & 350 LTR.), NXW Aura . Washer: FA Allure series 7 kg & above all models / FLT all Models.	3%	Nil	-	-

Easy EMI: TnC - Finance is at the sole discretion of the dealer. Finance option is valid only for a limited time period on select models through authorized dealers only. Godrej & Boyce Mfg. Co. Ltd. - Appliance Division disclaims any / all liabilities, cost or expenses whatsoever may arise in relation to the offer

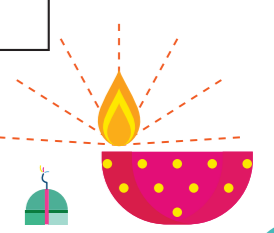
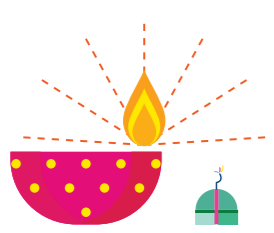
0% Interest on EMI

0% Interest on EMI with 3 / 6 and 9 month EMI conversion and 0 Down payment This offer is valid on select models at select outlets active with Pine labs. Valid on all leading credit cards and select debit cards. Participating Bank credit / debit cards: SBI, HDFC, ICICI, Axis, HSBC, Standard Chartered, American Express, Citibank, Kotak, IndusInd, RBL, Union Bank, Bank of Baroda, J&K Bank and Yes Bank.

INSTANT CASHBACK UPTO 20%

CATEGORY	CASHBACK	MAX CASH BACK
DC- 190 LTR & above (3 & 4 star) FF – 260 LTR & Below.	5%	750
DC- 5 Star models FF – above 260 LTR.	10%	1500
Converti (331 & 351 LTR)	15%	2500
NXW AURA	20%	12000

CATEGORY	CASHBACK	MAX CASH BACK
HDFC Bank	Yes	Yes
SBI Bank	Yes	-
ICICI Bank	Yes	Yes
Kotak mahindra bank	Yes	Yes
Bank of Baroda	Yes	-
Standar Charted Bank	Yes	-
Federal Bank	-	Yes
RBL Bank	Yes	-



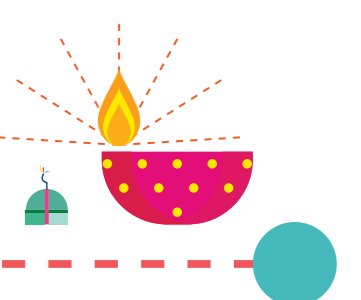
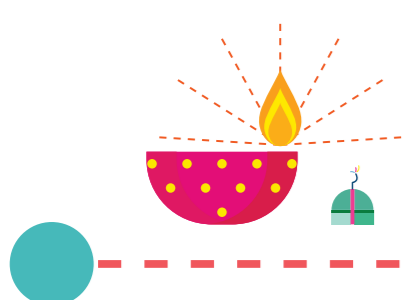
REFRIGERATORS



● CASHBACK TERMS AND CONDITIONS:

Offer valid on EMI transactions done via Pine Labs terminals at offline channels and online via Pine Labs PG.

- Offer valid only once per card per channel during program duration
- Valid on EMI transactions only.
- HDFC bank cashback applicable on 6 month EMI.
- Offer Period: 61 days (01st Oct - 15th Nov 2021)
- RBL bank cash back offer is also applicable on non EMI transaction under brand EMI.
- ICICI/ HDFC/ Kotak Mahindra/ Federal debit card holders can also avail EMI and cash back offers, subject to bank approval.
- Retailer needs to activate instant cashback facility through Pinelabs for Instant cashback offers.
- Instant cashback is applicable on selective bank and at selected stores
- In transactions where instant cashback is not activated, customers will receive cashback in duration of 90 days.



WASHING MACHINES



DEEP CLEANSING TECHNOLOGY WITH EXCITING OFFERS



EASY EMI OFFERS

SCHEME DESCRIPTION					BAJAJ FINANCE		HDFC / HDB IDFC / HOME CREDIT / TVS KOTAK FINANCE	
SCHEME DESCRIPTION	Max Tenure (months)	Monthly EMI	Advance EMI	Model description	DBD	PF	DBD	PF
Fix EMI ₹ 900	24 months	₹ 900	3,4	SA- up to 8 kg (Excluding Axis)	2.50%	₹ 450+Taxes	-	-
Fix EMI ₹ 1100	24 months	₹ 1100	3	SA- above 8Kg	2.50%	Nil	-	-
Fix EMI ₹ 1300	24 months	₹ 1300	3	FA- up to 7 kg	2.50%	Nil	-	-
Fix EMI ₹ 1500	24 months	₹ 1300	3	FA-Above 7 kg	2.50%	Nil	-	-
Fix EMI ₹ 1700	24 months	₹ 1700	3	FLT-up to 7 kg	2.50%	Nil	-	-
Fix EMI ₹ 1900	24 months	₹ 1900	3, 4	FLT- above 7 kg	2.50%	Nil	-	-
Take home an appliance for ₹ 1 down payment	8	8 EMI	0	All Front load, all Fully automatic washing machines.	3.00%	Nil	2.50%	Nil
1 EMI Off (Bajaj / HDB)	20 months	20 EMI	5	FLT 8 KG	3.00%	Nil	-	-
EBO Triple 0 Scheme - Brand stores	8 months	8 EMI	0	All Front load, Fully automatic Allure series & Semi automatic Ultima / Ultima S.	0.00%	₹ 0	0%	₹ 0
10 month EMI	10 months	10 EMI	2	All Front load, all Fully automatic washing machines.	2.50%	Nil	2.00%	Nil
12 month EMI	12	12 EMI	4	All Front load, all Fully automatic washing machines.	2.00%	Nil	2.00%	Rs.0
12 month EMI	12 months	12 EMI	4	SA < 8 KG	2.25%	₹ 450+Taxes	2.25%	₹ .0
Buy Godrej REF & Washer on FIX EMI ₹ 1900	24	₹ 1900	4	REF DC: DC above above 200 LTR (All star rating). Washer: SA Ultima and Ultima S models.	3%	Nil	-	-
Buy Godrej REF & Washer on FIX EMI ₹ 2700	24	₹ 2700	4	REF: FF 3 star all capacity, conver (331 & 350 LTR.), NXW Aura . Washer: FA Allure series 7 kg & above all models / FLT all Models.	3%	Nil	-	-

Easy EMI: TnC - Finance is at the sole discretion of the dealer. Finance option is valid only for a limited time period on select models through authorized dealers only. Godrej & Boyce Mfg. Co. Ltd. - Appliance Division disclaims any / all liabilities, cost or expenses whatsoever may arise in relation to the offer

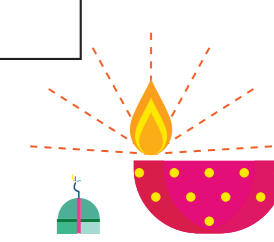
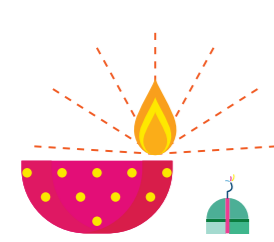
0% Interest on EMI

0% Interest on EMI with 3 / 6 and 9 month EMI conversion and 0 Down payment This offer is valid on select models at select outlets active with Pine labs. Valid on all leading credit cards and select debit cards. Participating Bank credit / debit cards: SBI, HDFC, ICICI, Axis, HSBC, Standard Chartered, American Express, Citibank, Kotak, IndusInd, RBL, Union Bank, Bank of Baroda, J&K Bank and Yes Bank.

INSTANT CASHBACK UPTO 20%

CATEGORY	CASHBACK	MAX CASH BACK
Ultima S Models	5%	750
Allure series & FLT up-to 1000 RPM	10%	1000
FLT 7 kg 1200 RPM	15%	2000
FLT 8 kg 1400 RPM	20%	3000

CATEGORY	CASHBACK	MAX CASH BACK
HDFC Bank	Yes	Yes
SBI Bank	Yes	-
ICICI Bank	Yes	Yes
Kotak mahindra bank	Yes	Yes
Bank of Baroda	Yes	-
Standar Charted Bank	Yes	-
Federal Bank	-	Yes
RBL Bank	Yes	-





● TERMS AND CONDITIONS

Offer valid on EMI transactions done via Pine Labs terminals at offline channels and online via Pine Labs PG.

- Offer valid only once per card per channel during program duration
- Valid on EMI transactions only.
- HDFC bank cashback applicable on 6 month EMI.
- Offer Period: 61 days (01st Oct – 15th Nov 2021)
- RBL bank cash back offer is also applicable on non EMI transaction under brand EMI.
- ICICI/HDFC/Kotak Mahindra/Federal debit card holders can also avail EMI and cash back offers , subject to bank approval.
- Retailer needs to activate instant cashback facility through Pinelabs for Instant cashback offers.
- Instant cashback is applicable on selective bank and at selected stores.
- In transactions where instant cashback is not activated, customers will receive cashback in duration of 90 days.

Extended warranty up to 1 year on Fully Automatic

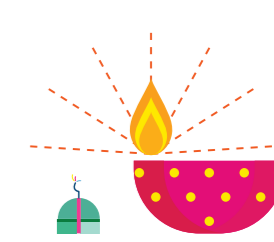
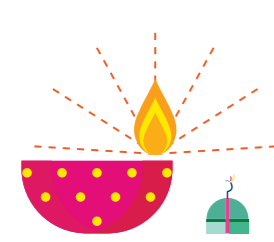
▶ 1 YEAR EXTENDED WARRANTY ON FULLY AUTOMATIC WASHING MACHINE

● TERMS AND CONDITIONS:

- This scheme is applicable only for sale through Godrej Exclusive Brand Outlets, Godrej Preferred Brand Outlets, authorized dealers and authorized retail counters and is confined to the first purchaser only and is non-transferable.
- Warranty is applicable from date of purchase i.e invoice date, against defective material or workmanship. In case of any such defects, Godrej & Boyce Manufacturing Company Limited – Appliances Division undertakes to get the appliances repaired under the Warranty Period, subject to terms and condition as set out under this document.
- The Company reserves the right to verify any information or detail submitted and where the Company considers that there has been any breach of the terms & conditions or any misrepresentation under this Scheme, the Company shall at its discretion notify and be at liberty to refuse , discontinue or cancel any benefits under the Scheme including but not limited to any extended warranty.
- To avail the benefits, customer has to register themselves on site www.godrej.com/appliances/extended-warranty with product and invoice details within 7 days of purchase
- Repairs and replacement of spare parts will be carried out through Godrej Appliances authorised service provider.
- In case there are two schemes that are on offer at the same time, both the offers shall not be applicable simultaneously and in addition to one another but the offer with higher benefit in terms of months of warranty shall be applicable.
- Godrej or its authorized service provider (ASP) will collect any parts or components replaced.
- Parts Covered and Not Covered: As per below table:

PRODUCT	PARTS COVERED	PARTS NOT COVERED
Washing Machine Fully Automatic	motors, inlet valves, drain valves, program timer, mechanical assembly, buzzer, on / off switch and water level sensor.	Outer body, Colour components, Gasket, Plastic, glass, bulb, power cord and rubber parts

- In case of any conflict the decision made by Godrej will be final.
- The Warranty Period on the replaced or repaired Product shall be reduced to the balance period, as computed from the date of first sale of the Product.
- Product features, specifications and warranty terms are subject to change without notice.
- For further details on Terms and conditions, visit www.godrej.com/appliances/extended-warranty



AIR CONDITIONERS



SUPERFAST COOLING, SUPER COOL OFFERS



EASY EMI OFFERS

SCHEME DESCRIPTION					BAJAJ FINANCE		HDFC / HDB IDFC / HOME CREDIT / TVS KOTAK FINANCE	
SCHEME DESCRIPTION	Max Tenure (months)	Monthly EMI	Advance EMI	Model description	DBD	PF	DBD	PF
Take home an appliance for ₹ 1 down payment	8	8 EMI	0	All Inverter Split ACs & Fixed Speed Split AC.	3.50%	₹ 450 + Taxes	3.25%	Nil
EBO Triple 0 Scheme - Brand stores	8	8 EMI	0	All 5 Star Inverter Splits & on all 2 Tr Splits AC.	0.00%	Nil	0.00%	Nil
10 month EMI	10	10 EMI	2	All Inverter Split ACs & Fixed Speed Split AC.	3.00%	₹ 450 + Taxes	2.75%	Nil
12 month EMI	12	12 EMI	4	a) All Models Inverter Split/Window AC b) Fixed Speed Split/Window AC	2.00%	Nil	2.00%	Rs.0
Fix EMI ₹ 2525	24	₹ 2525	4	All 5 Star Inverter Splits & on all 2 Tr. Splits AC.	3.00%	₹ 450 + Taxes	-	-

Easy EMI: TnC - Finance is at the sole discretion of the dealer. Finance option is valid only for a limited time period on select models through authorized dealers only. Godrej & Boyce Mfg. Co. Ltd. - Appliance Division disclaims any / all liabilities, cost or expenses whatsoever may arise in relation to the offer

0% Interest on EMI

0% interest on EMI with 3 / 6 and 9 month EMI conversion and 0 Down payment This offer is valid on select models at select outlets active with Pine Labs. Valid on all leading credit cards and select debit cards. Participating Bank credit / debit cards: SBI, HDFC, ICICI, Axis, HSBC, Standard Chartered, American Express, Citibank, Kotak, IndusInd, RBL, Union Bank, Bank of Baroda, J&K Bank and Yes Bank.

INSTANT CASHBACK UPTO 20%

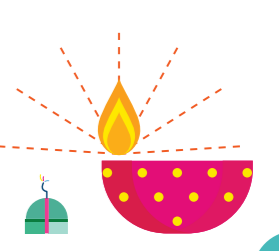
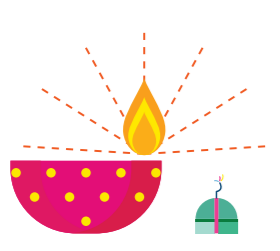
CATEGORY	CASHBACK	MAX CASH BACK
On all 5 Star Inverter Split Acs	10%	3000
All 2 Tr Split Acs	20%	6000

CATEGORY	CASHBACK	MAX CASH BACK
HDFC Bank	Yes	Yes
SBI Bank	Yes	-
ICICI Bank	Yes	Yes
Kotak mahindra bank	Yes	Yes
Bank of Baroda	Yes	-
Standar Charted Bank	Yes	-
Federal Bank	-	Yes
RBL Bank	Yes	-

TERMS AND CONDITIONS:

Offer valid on EMI transactions done via Pine Labs terminals at offline channels and online via Pine Labs PG.

- Offer valid only once per card per channel during program duration
- Valid on EMI transactions only.
- HDFC bank cashback applicable on 6 month EMI.
- Offer Period: 61 days (01st Oct – 15th Nov 2021)
- RBL bank cash back offer is also applicable on non EMI transaction under brand EMI.
- ICICI/HDFC/Kotak Mahindra/Federal debit card holders can also avail EMI and cash back offers, subject to bank approval.
- Retailer needs to activate instant cashback facility through Pinelabs for Instant cashback offers.
- Instant cashback is applicable on selective bank and at selected stores.
- In transactions where instant cashback is not activated, customers will receive cashback in duration of 90 days.



▶ 5 year extended warranty scheme on ACs

The Air Conditioner will have extended warranty on functional parts from the date of installation, subject to the following conditions:

1) Extended warranty will be applicable only when the customer register the product within 7 days of purchase/installation and have the

AC installed through a Godrej authorised Service Provider through the process below:

- SMS ACEXWAR to 9223070107
- Call on 18002095511 with details for registration
- Online registration on website (www.godrejsmartcare.com)

2) During the standard 1st year warranty period, the customer is entitled to 2 preventive Maintenance Service per year, free of cost.

• From 2nd year onwards, the customer needs to get the Air Conditioner regularly serviced through a Godrej authorised Service Provider.

• Routine/Preventive Service from 2nd year till 5th year shall be on chargeable basis @ ₹599 + GST per Service. The customer must

avail to Preventive Maintenance Service per year, from 2nd year onward till the 5th year.

• The customer can pay for every service done every 6 months and has a choice to pay for all the 4 year preventive maintenance services. Viz. 8 services, together by paying the full amount of $599 \times 8 \text{ services} = ₹4,792 + \text{GST}$

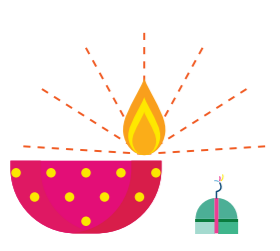
▶ Exchange upto ₹ 3000 on old models

Exchange offer is valid only on select models for limited period only. Old appliances should be in working condition. Discount offered is not the value of the exchanged model. Godrej Appliances are also available without this offer. Exchange offer valid only on MRP of the product. Exchange prices may vary by models. The above offer is by and at the sole discretion of the dealer. Godrej & Boyce Mfg. Co. Ltd. - Appliance Division disclaims any / all liabilities, cost or expenses whatsoever may arise in relation to the offer.

▶ Subsidized installation on AC ₹ 599/- +GST Onwards.

• For sale done through Omnitech Retail or CloudTail India Pvt Ltd., Standard Installation Charges will be ₹1200 + GST. For Sale done through Marketplace on Ecommerce, Standard Installation Charges will be ₹1500 + GST.

• The above charges are for installation for sites with in the operating municipal limits of the authorised Godrej Service Franchisee. For sites outside the municipal limits of the Service Franchisee, the charges will be an additional ₹200+GST. The offer is by and at the sole discretion of the dealer. Godrej & Boyce Mfg.Co. Ltd. -Appliance Division disclaims any/ all liabilities, cost or expenses whatsoever may arise in relation to the offer.



MICROWAVE OVENS



HEALTHY HABITS MADE EASIER



EASY EMI OFFERS

SCHEME DESCRIPTION					BAJAJ FINANCE		HDFC / HDB IDFC / HOME CREDIT / TVS KOTAK FINANCE	
SCHEME DESCRIPTION	Max Tenure (months)	Monthly EMI	Advance EMI	Model description	DBD	PF	DBD	PF
Take home an appliance for ₹1 down payment	8	8 EMI	0	25 Ltr and above	2.50%	Nil	2.50%	Nil
EBO Triple 0 Scheme - Brand store	8	8 EMI	0	25 Ltr and above	0.00%	Nil	0.00%	Nil
10 month EMI	10	10 EMI	2	All Models (Except solo and grill)	2.50%	Nil	2.25%	Nil
12 month EMI	12	12 EMI	4	All Models (Except solo and grill)	2.50%	Nil	2.20%	Nil

Easy EMI: TnC - Finance is at the sole discretion of the dealer. Finance option is valid only for a limited time period on select models through authorized dealers only. Godrej & Boyce Mfg. Co. Ltd. - Appliance Division disclaims any / all liabilities, cost or expenses whatsoever may arise in relation to the offer

0% Interest on EMI

0% interest on EMI with 3 / 6 and 9 month EMI conversion and 0 Down payment This offer is valid on select models at select outlets active with Pine labs. Valid on all leading credit cards and select debit cards. Participating Bank credit / debit cards: SBI, HDFC, ICICI, Axis, HSBC, Standard Chartered, American Express, Citibank, Kotak, IndusInd, RBL, Union Bank, Bank of Baroda, J&K Bank and Yes Bank.

INSTANT CASHBACK UPTO 5%

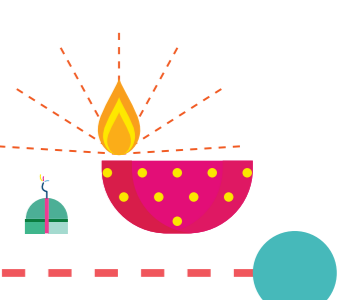
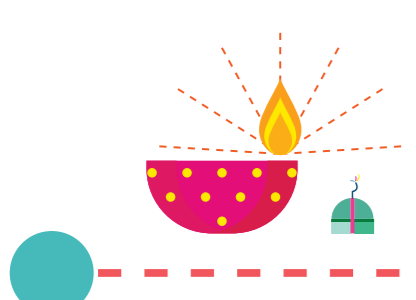
CATEGORY	CASHBACK	MAX CASH BACK
All 25 ltr & above models	5%	750

CATEGORY	CASHBACK	MAX CASH BACK
HDFC Bank	Yes	Yes
SBI Bank	Yes	-
ICICI Bank	Yes	Yes
Kotak mahindra bank	Yes	Yes
Bank of Baroda	Yes	-
Standar Charted Bank	Yes	-
Federal Bank	-	Yes
RBL Bank	Yes	-

TERMS AND CONDITIONS:

Offer valid on EMI transactions done via Pine Labs terminals at offline channels and online via Pine Labs PG.

- Offer valid only once per card per channel during program duration
- Valid on EMI transactions only.
- HDFC bank cashback applicable on 6 month EMI.
- Offer Period: 61 days (01st Oct – 15th Nov 2021)
- RBL bank cash back offer is also applicable on non EMI transaction under brand EMI.
- ICICI / HDFC / Kotak Mahindra / Federal debit card holders can also avail EMI and cash back offers , subject to bank approval.
- Retailer needs to activate instant cashback facility through Pinelabs for Instant cashback offers.
- Instant cashback is applicable on selective bank and at selected stores.
- In transactions where instant cashback is not activated, customers will receive cashback in duration of 90 days.



THE BETTER WAY TO DO IT



EASY EMI OFFERS

SCHEME DESCRIPTION					BAJAJ FINANCE		HDFC / HDB IDFC / HOME CREDIT / TVS KOTAK FINANCE	
SCHEME DESCRIPTION	Max Tenure (months)	Monthly EMI	Advance EMI	Model description	DBD	PF	DBD	PF
Take home an appliance for ₹1 down payment	8	8 EMI	0	On E penta 500 ltr.	3.00%	Nil	2.50%	Nil
EBO Triple 0 Scheme - Brand store	8	8 EMI	0	On E penta 300 Ltrs/400 ltr & 500 ltr.	0.00%	Nil	0.00%	Nil
12 month EMI	12	12 EMI	4	On E penta 500 ltr.	2.00%	Nil	2.00%	Nil
12 month EMI	12	12 EMI	4	All Models (Except E Penta 500 Ltr).	2.00%	₹ 450 + Taxes	2.00%	Nil

Easy EMI: TnC - Finance is at the sole discretion of the dealer. Finance option is valid only for a limited time period on select models through authorized dealers only. Godrej & Boyce Mfg. Co. Ltd. - Appliance Division disclaims any / all liabilities, cost or expenses whatsoever may arise in relation to the offer

0% Interest on EMI

0% interest on EMI with 3 / 6 and 9 month EMI conversion and 0 Down payment This offer is valid on select models at select outlets active with Pine Labs. Valid on all leading credit cards and select debit cards. Participating Bank credit / debit cards: SBI, HDFC, ICICI, Axis, HSBC, Standard Chartered, American Express, Citibank, Kotak, IndusInd, RBL, Union Bank, Bank of Baroda, J&K Bank and Yes Bank.

INSTANT CASHBACK UPTO 10%

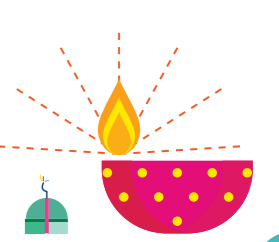
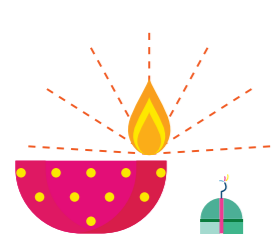
CATEGORY	CASHBACK	MAX CASH BACK
All Models - Dishwasher	10%	2000

CATEGORY	CASHBACK	MAX CASH BACK
HDFC Bank	Yes	Yes
SBI Bank	Yes	-
ICICI Bank	Yes	Yes
Kotak mahindra bank	Yes	Yes
Bank of Baroda	Yes	-
Standar Charted Bank	Yes	-
Federal Bank	-	Yes
RBL Bank	Yes	-

TERMS AND CONDITIONS:

Offer valid on EMI transactions done via Pine Labs terminals at offline channels and online via Pine Labs PG.

- Offer valid only once per card per channel during program duration
- Valid on EMI transactions only.
- HDFC bank cashback applicable on 6 month EMI.
- Offer Period: 61 days (01st Oct – 15th Nov 2021)
- RBL bank cash back offer is also applicable on non EMI transaction under brand EMI.
- ICICI/HDFC/Kotak Mahindra/Federal debit card holders can also avail EMI and cash back offers, subject to bank approval.
- Retailer needs to activate instant cashback facility through Pinelabs for Instant cashback offers.
- Instant cashback is applicable on selective bank and at selected stores.
- In transactions where instant cashback is not activated, customers will receive cashback in duration of 90 days.



LETS MAKE SUMMERS A LITTLE ICY



EASY EMI OFFERS

SCHEME DESCRIPTION					BAJAJ FINANCE		HDFC / HDB IDFC / HOME CREDIT / TVS KOTAK FINANCE	
SCHEME DESCRIPTION	Max Tenure (months)	Monthly EMI	Advance EMI	Model description	DBD	PF	DBD	PF
Buy Godrej Appliances with ₹ 1 Down payment	8 month	8 EMI	0	On E penta 500 ltr.	3.00%	Nil	2.50%	Nil
EBO Triple 0 Scheme - Brand store	8 month	8 EMI	0	On E penta 300 Ltrs/400 ltr & 500 ltr.	0.00%	Nil	0.00%	Nil
12 month EMI	12 month	12 EMI	4	On E penta 500 ltr.	2.00%	Nil	2.00%	Nil
12 month EMI	12 month	12 EMI	4	All Models (Except E Penta 500 Ltr).	2.00%	₹ 450 + Taxes	2.00%	Nil

Easy EMI: TnC - Finance is at the sole discretion of the dealer. Finance option is valid only for a limited time period on select models through authorized dealers only. Godrej & Boyce Mfg. Co. Ltd. - Appliance Division disclaims any / all liabilities, cost or expenses whatsoever may arise in relation to the offer

0% Interest on EMI

0% interest on EMI with 3 / 6 and 9 month EMI conversion and 0 Down payment This offer is valid on select models at select outlets active with Pine labs. Valid on all leading credit cards and select debit cards. Participating Bank credit / debit cards: SBI, HDFC, ICICI, Axis, HSBC, Standard Chartered, American Express, Citibank, Kotak, IndusInd, RBL, Union Bank, Bank of Baroda, J&K Bank and Yes Bank.

INSTANT CASHBACK UPTO 10%

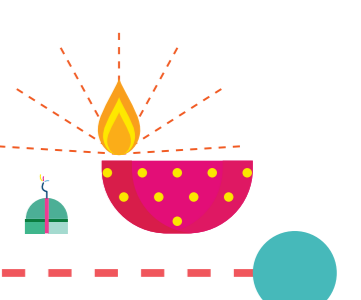
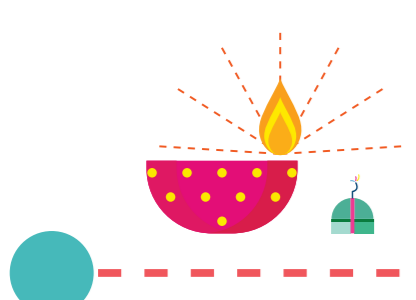
CATEGORY	CASHBACK	MAX CASH BACK
Edge 80 RBFN4 & Edge 100 RBFN5	10%	750

CATEGORY	CASHBACK	MAX CASH BACK
HDFC Bank	Yes	Yes
SBI Bank	Yes	-
ICICI Bank	Yes	Yes
Kotak mahindra bank	Yes	Yes
Bank of Baroda	Yes	-
Standar Charted Bank	Yes	-
Federal Bank	-	Yes
RBL Bank	Yes	-

TERMS AND CONDITIONS:

Offer valid on EMI transactions done via Pine Labs terminals at offline channels and online via Pine Labs PG.

- Offer valid only once per card per channel during program duration
- Valid on EMI transactions only.
- HDFC bank cashback applicable on 6 month EMI.
- Offer Period: 61 days (01st Oct – 15th Nov 2021)
- RBL bank cash back offer is also applicable on non EMI transaction under brand EMI.
- ICICI/HDFC/Kotak Mahindra/Federal debit card holders can also avail EMI and cash back offers , subject to bank approval.
- Retailer needs to activate instant cashback facility through Pinelabs for Instant cashback offers.
- Instant cashback is applicable on selective bank and at selected stores.
- In transactions where instant cashback is not activated, customers will receive cashback in duration of 90 days.



DEEP FREEZER



MAXIMUM COOLING, MAXIMUM SAVINGS



EASY EMI OFFERS

SCHEME DESCRIPTION					BAJAJ FINANCE		HDFC / HDB IDFC / HOME CREDIT / TVS KOTAK FINANCE	
SCHEME DESCRIPTION	Max Tenure (months)	Monthly EMI	Advance EMI	Model description	DBD	PF	DBD	PF
Take home an appliance for ₹ 1 down payment	8	8 EMI	0	All Models	2.50%	Nil	2.50%	Nil
EBO Triple 0 Scheme - Brand store	8	8 EMI	0	All Models	0.00%	Nil	0.00%	Nil
1 EMI Off (Bajaj/HDB /Kotak)	20	20 EMI	5	UV, Triple Wash & Steam, Triple wash	3.00%	Nil	3.00%	Nil
10 month EMI	10	10 EMI	2	All Models	2.50%	Nil	2.00%	Nil
12 month EMI	12	12 EMI	4	All Models	2.50%	Nil	2.00%	Nil

Easy EMI: TnC - Finance is at the sole discretion of the dealer. Finance option is valid only for a limited time period on select models through authorized dealers only. Godrej & Boyce Mfg. Co. Ltd. - Appliance Division disclaims any / all liabilities, cost or expenses whatsoever may arise in relation to the offer

0% Interest on EMI

with 3 / 6 and 9 month EMI conversion and 0 Down payment This offer is valid on select models at select outlets active with Pine Labs. Valid on all leading credit cards and select debit cards. Participating Bank credit / debit cards: SBI, HDFC, ICICI, Axis, HSBC, Standard Chartered, American Express, Citibank, Kotak, IndusInd, RBL, Union Bank, Bank of Baroda, J&K Bank and Yes Bank.

INSTANT CASHBACK UPTO 10%

CATEGORY	CASHBACK	MAX CASH BACK
E penta 500 LTR. Models	10%	2000

CATEGORY	CASHBACK	MAX CASH BACK
HDFC Bank	Yes	Yes
SBI Bank	Yes	-
ICICI Bank	Yes	Yes
Kotak mahindra bank	Yes	Yes
Bank of Baroda	Yes	-
Standar Charted Bank	Yes	-
Federal Bank	-	Yes
RBL Bank	Yes	-

TERMS AND CONDITIONS:

Offer valid on EMI transactions done via Pine Labs terminals at offline channels and online via Pine Labs PG.

- Offer valid only once per card per channel during program duration
- Valid on EMI transactions only.
- HDFC bank cashback applicable on 6 month EMI.
- Offer Period: 61 days (01st Oct – 15th Nov 2021)
- RBL bank cash back offer is also applicable on non EMI transaction under brand EMI.
- ICICI/HDFC/Kotak Mahindra/Federal debit card holders can also avail EMI and cash back offers , subject to bank approval.
- Retailer needs to activate instant cashback facility through Pinelabs for Instant cashback offers.
- Instant cashback is applicable on selective bank and at selected stores.
- In transactions where instant cashback is not activated, customers will receive cashback in duration of 90 days.

